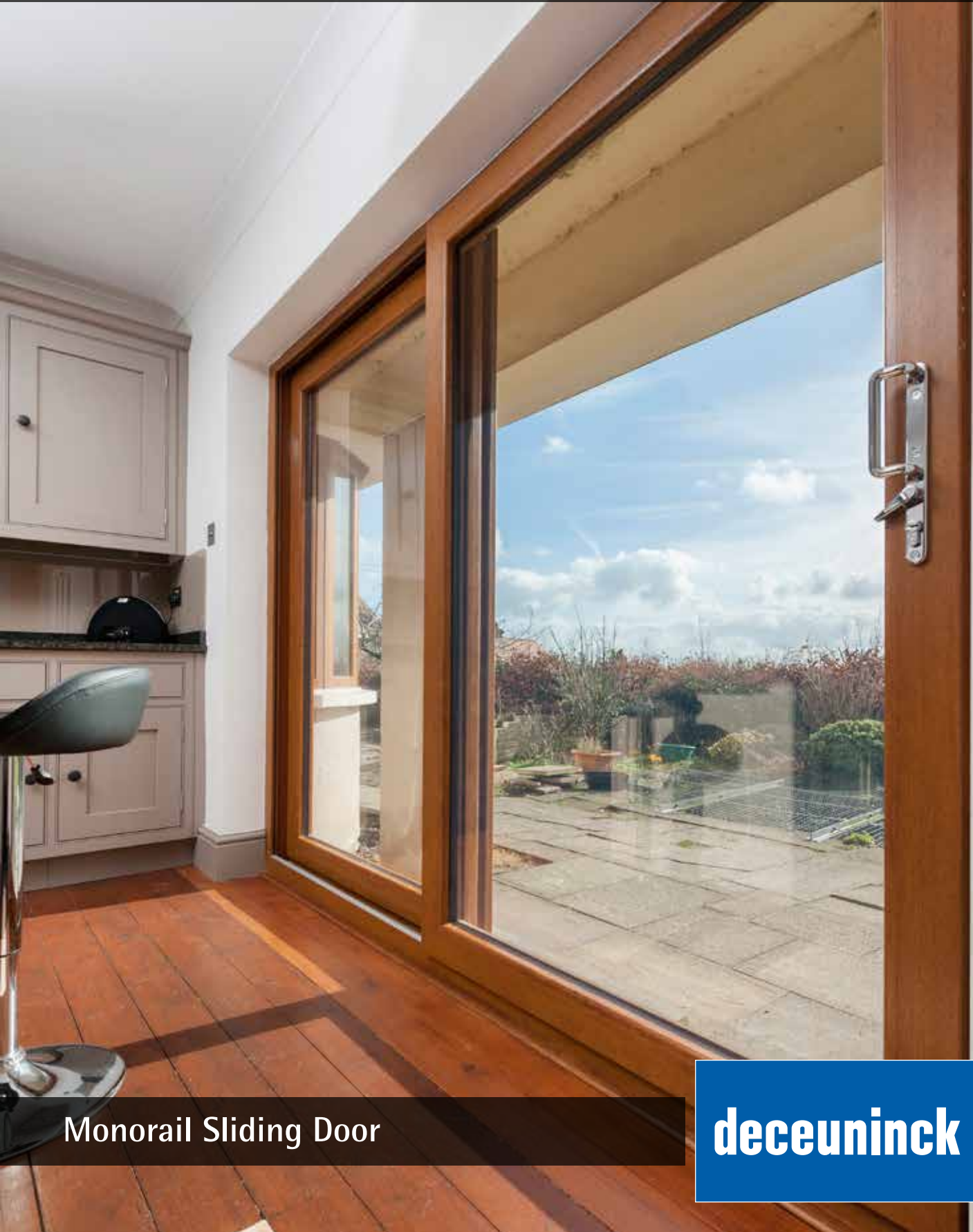


Beautiful living spaces



Monorail Sliding Door

deceuninck



Intelligent Design

Deceuninck's UNIQUE Monorail is a contemporary, high performance Sliding Door System. It's perfect for very wide openings and ideal for homeowners looking to make the most of great views and their indoor/outdoor living space.

Monorail opens up space between the home and the garden, balcony or terrace, allowing you to admire views without obstruction. It spans up to 4.5 metres with just two panes or 6 metres with just three panes!

Monorail glides rather than slides, silently, securely and effortlessly on high quality nylon rollers, and provides excellent weather and thermal performance. It demonstrates the kind of intelligent design and thinking that makes Deceuninck products market leaders.



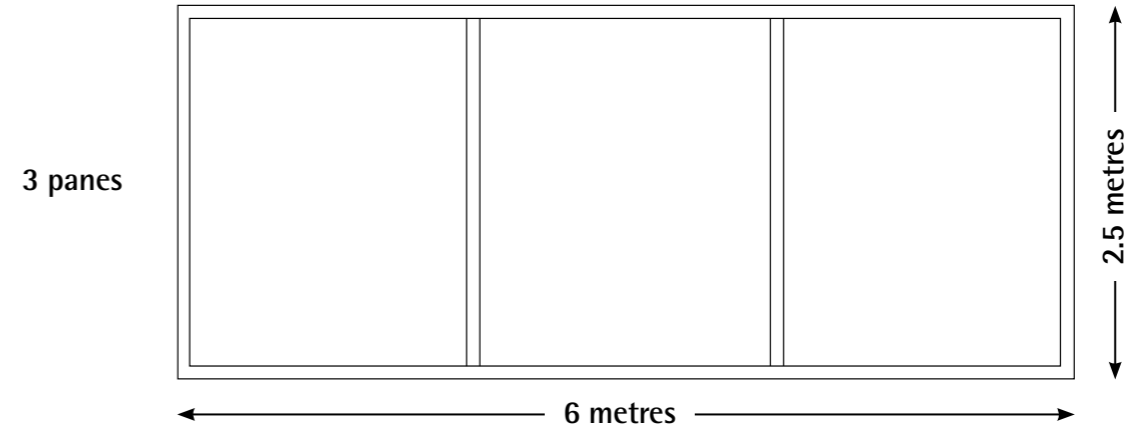
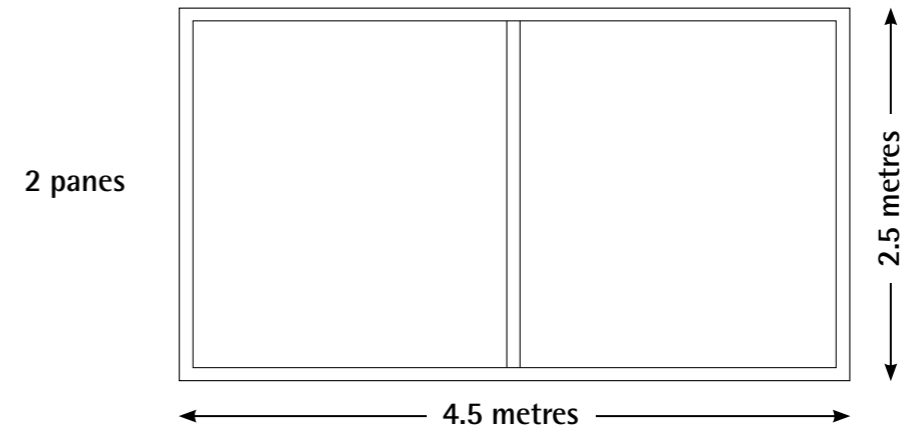
Key features:

- 2 panes span up to 4.5 metres
- 3 panes span up to 6 metres!
- Excellent weather performance with integrated multifunctional gasket and brush seals
- Looks and feels like aluminium with the superior thermal performance of PVC-U
- Fully reinforced PVC-U profile with galvanised steel for additional strength
- Six position multi-point locking mechanism as standard for added security
- Stunning complementary hardware to complete the look
- Contemporary colour range available from stock



Choose the door style to suit your home

Monorail



Colour Choice

Monorail comes in White and a choice of colours. Choose from our **COLOUR** *express* woodgrain foils including two bi-colour options with White inside.

Woodgrain foils available from stock:



deceuninck

Deceuninck Limited
Stanier Road
Porte Marsh Industrial Estate
Calne
Wiltshire SN11 9PX

Telephone: 01249 816 969
Email: deceuninck.ltd@deceuninck.com
www.deceuninck.co.uk

